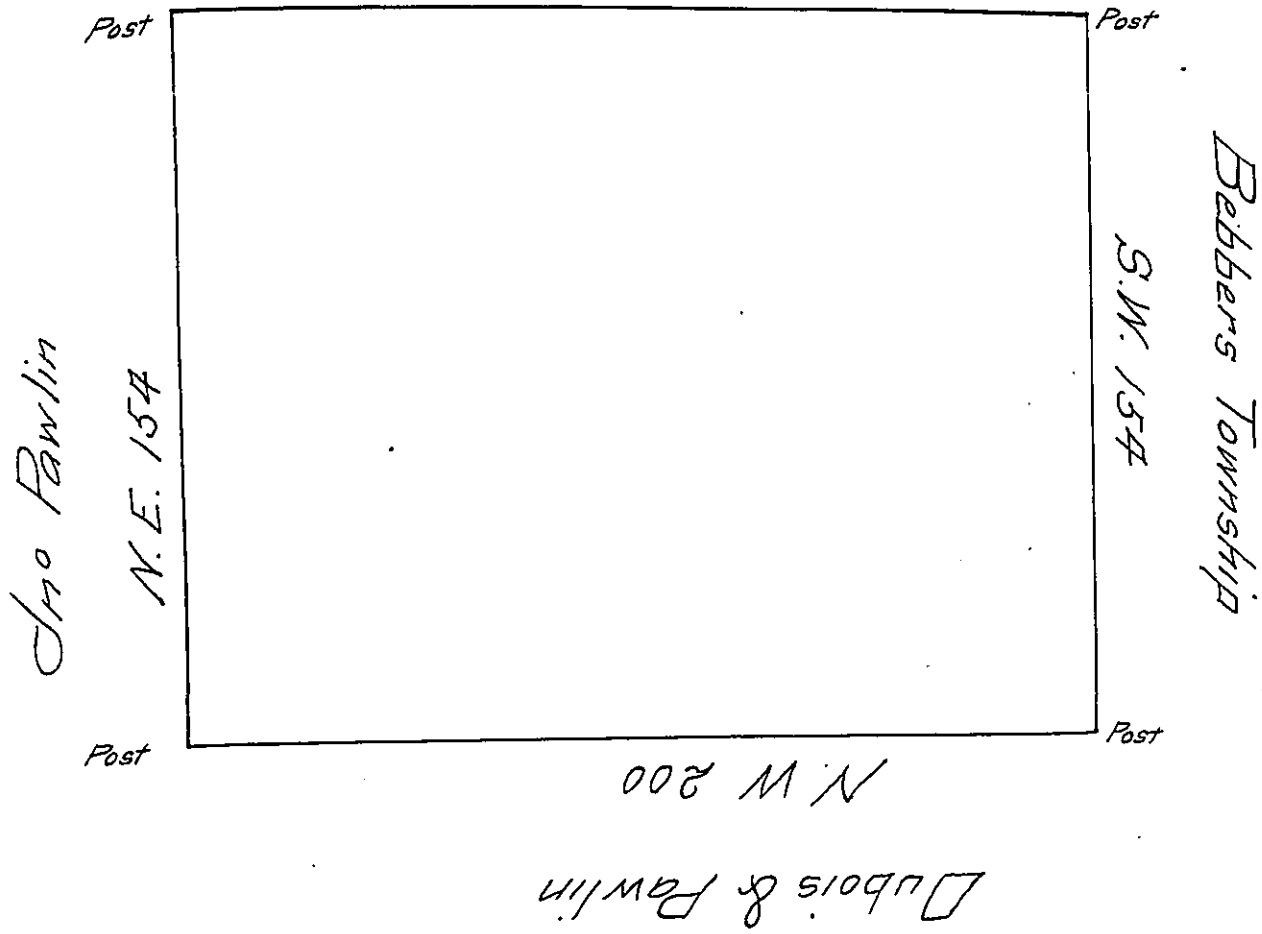


Land of Jacob Merkley
S. E. 200



By Virtue of a Warrant from the Commissioners dated the fourth day of the first Month 1717⁸ Surveyed and laid out to Joseph Shippen in Right of James Robins.

a Tract of Land Situate in Philad^a County beginning at a post a Corner of Jacob Merkleys land Thence by the Same South East two hundred perches to a Post in the line of Beber Township Thence by ye Same South West one hundred fifty four perches to a Post a Corner of sd Beber Township Thence by land of Racheal Dubois and John Pawlin North West Two hundred perches to a post Thence by land of the Said John Pawlin North East One hundred fifty four perches to ye Place of beginning Containing One hundred Eighty two Acres with Allowance of Six $\frac{1}{2}$ Cent

Surveyed August 25th 1731

N. Scull.

IN TESTIMONY that the above is a copy of the original remaining on file in the Department of Internal Affairs of Pennsylvania, made conformably to an Act of Assembly approved the 16th day of February, 1833, I have hereunto set my Hand and caused the Seal of said Department to be affixed at Harrisburg, this sixth day of July 1910

Henry Horck
Secretary of Internal Affairs.